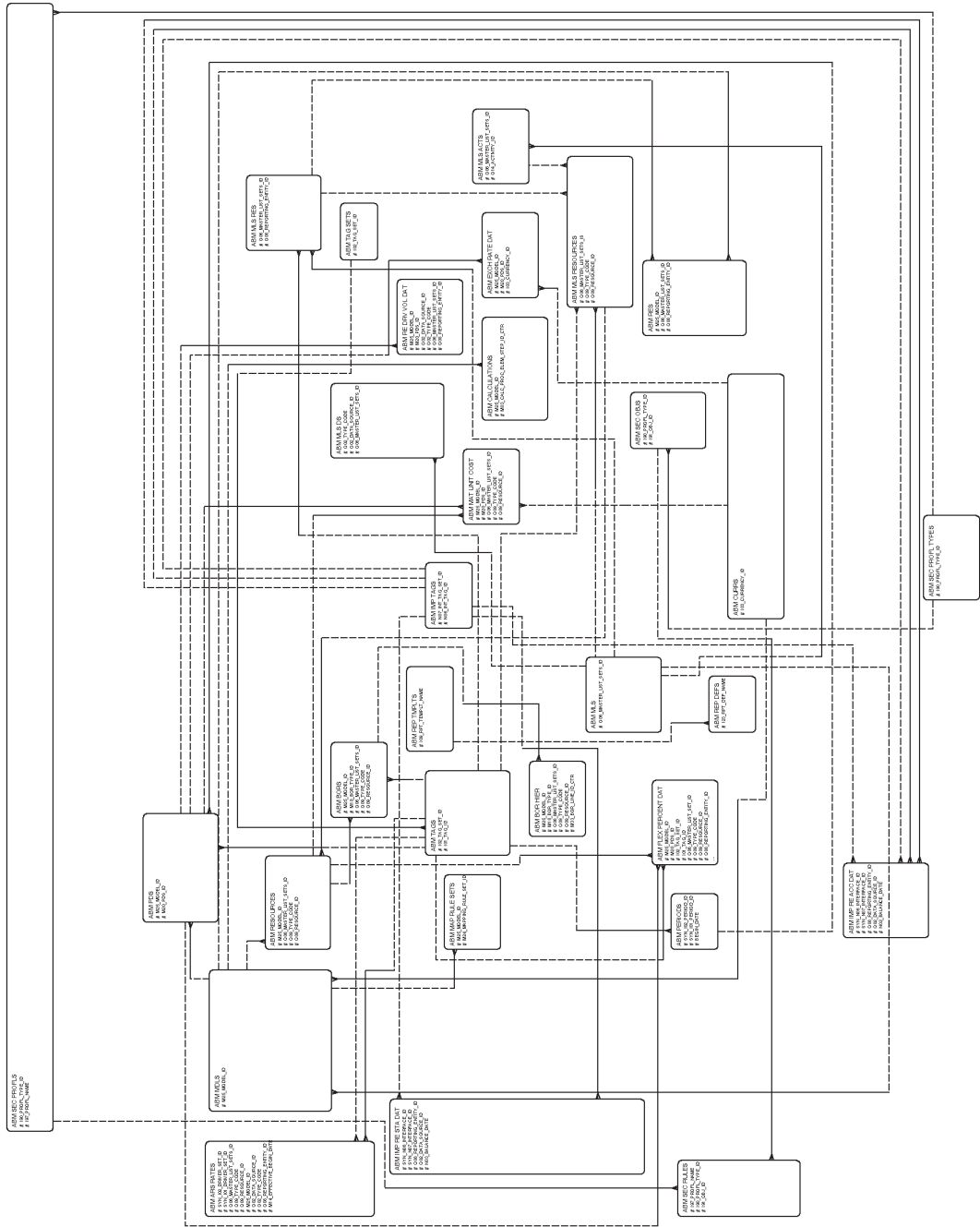


Oracle Activity-Based Management Summary Database Diagram



Oracle Proprietary, Confidential Information—Use Restricted by Contract

Database Diagrams

This section graphically represents most of the significant Oracle ABM products tables and the relationships between them, organized by building block. Use this section to quickly learn what tables each Oracle Activity-Based Management application building block uses, and how these tables interrelate. Then, you can refer to the Table and View Definitions sections of Chapter 3 for more detailed information about each of those tables.

This section contains a database diagram for each of the following Oracle Activity-Based Management application building blocks:

- Diagram 1: Rates, Rate Sets, Activity Hierarchy – Cost Rollup
- Diagram 2: Attributes
- Diagram 3: Bill Hierarchy and Cost Object Unit Costs
- Diagram 4: Budgeting
- Diagram 5: Data Set and Exchange Rates
- Diagram 6: Dept Data and Stat + Account
- Diagram 7: Imports
- Diagram 8: Labels
- Diagram 9: Master List
- Diagram 10: Mapping / Transactional Mapping
- Diagram 11: Materials
- Diagram 12: Models
- Diagram 13: Reports
- Diagram 14: Resource Data / Stat + Account
- Diagram 15: Security

Some tables, especially important reference tables, appear in more than one database diagram. When several building blocks use a table, we show that table in each appropriate database diagram.

Rates, Rate Sets, Activity Hierarchy – Cost Rollup

Diagram 1 contains all Rates, Rate Sets, Activity Hierarchy – Cost Rollup entities and the relationships between them.

Attributes

Diagram 2 contains all ABM Attribute entities and the relationships between them.

Bill Hierarchy and Cost Object Unit Costs

Diagram 3 contains all Bill Hierarchy / Co Unit Costs entities and the relationships between them.

Budgeting

Diagram 4 contains all Budgeting entities and the relationships between them.

Data Set and Exchange Rates

Diagram 5 contains all Data Set and Exchange Rates entities and the relationships between them.

Dept Data and Stat + Account

Diagram 6 contains all Dept Data / Stat + Account entities and the relationships between them.

Imports

Diagram 7 contains all Import entities and the relationships between them.

Labels

Diagram 8 contains all ABM Label entities and the relationships between them.

Master List

Diagram 9 contains all Master List entities and the relationships between them.

Mapping/Transactional Mapping

Diagram 10 contains all Mapping and Transactional Mapping entities and the relationships between them.

Materials

Diagram 11 contains all Materials entities and the relationships between them.

Models

Diagram 12 contains all Model entities and the relationships between them.

Reports

Diagram 13 contains all Reports entities and the relationships between them.

Resource Data / Stat + Account

Diagram 14 contains all Resource Data / Stat + Account entities and the relationships between them.

Security

Diagram 15 contains all Security entities and the relationships between them.

Diagram 1 – Rates, Rate Sets, Activity Hierarchy – Cost Rollup

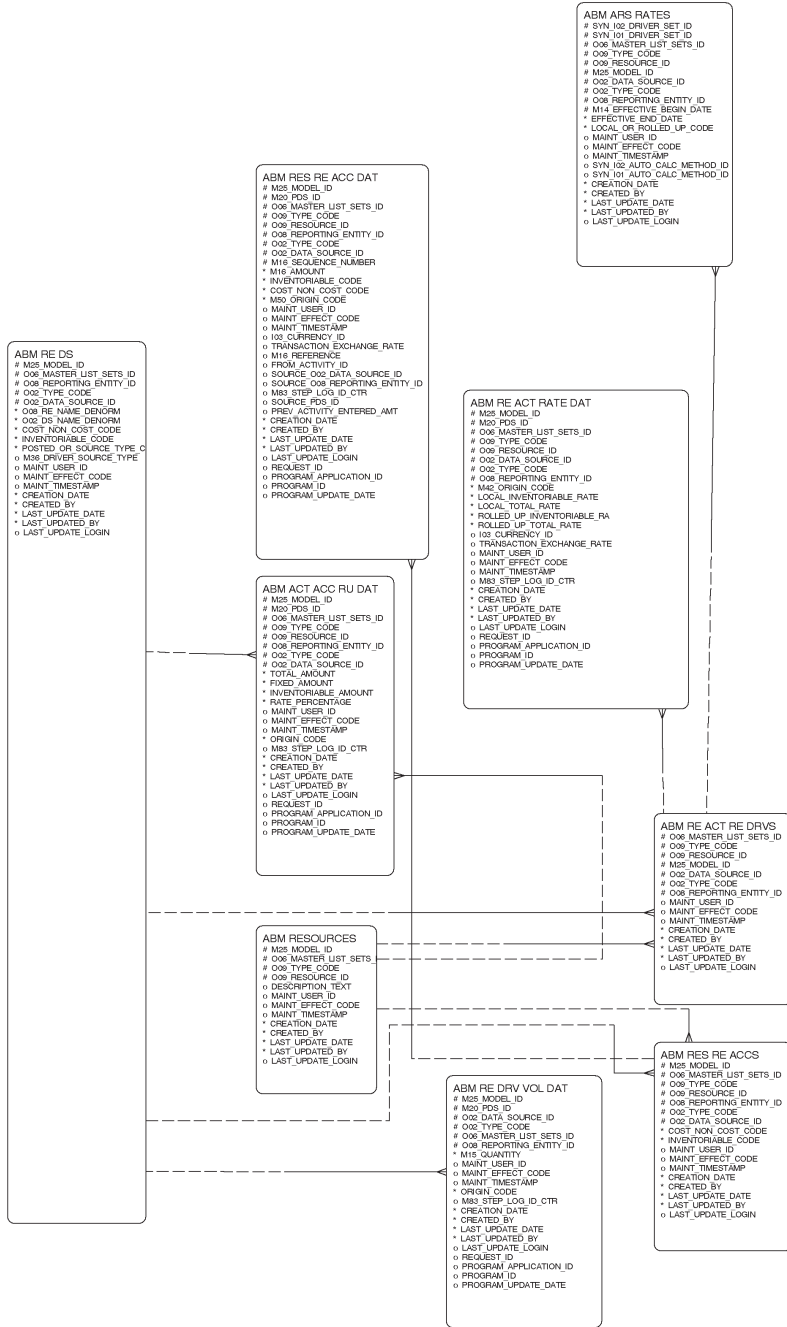


Diagram 2 – Attributes

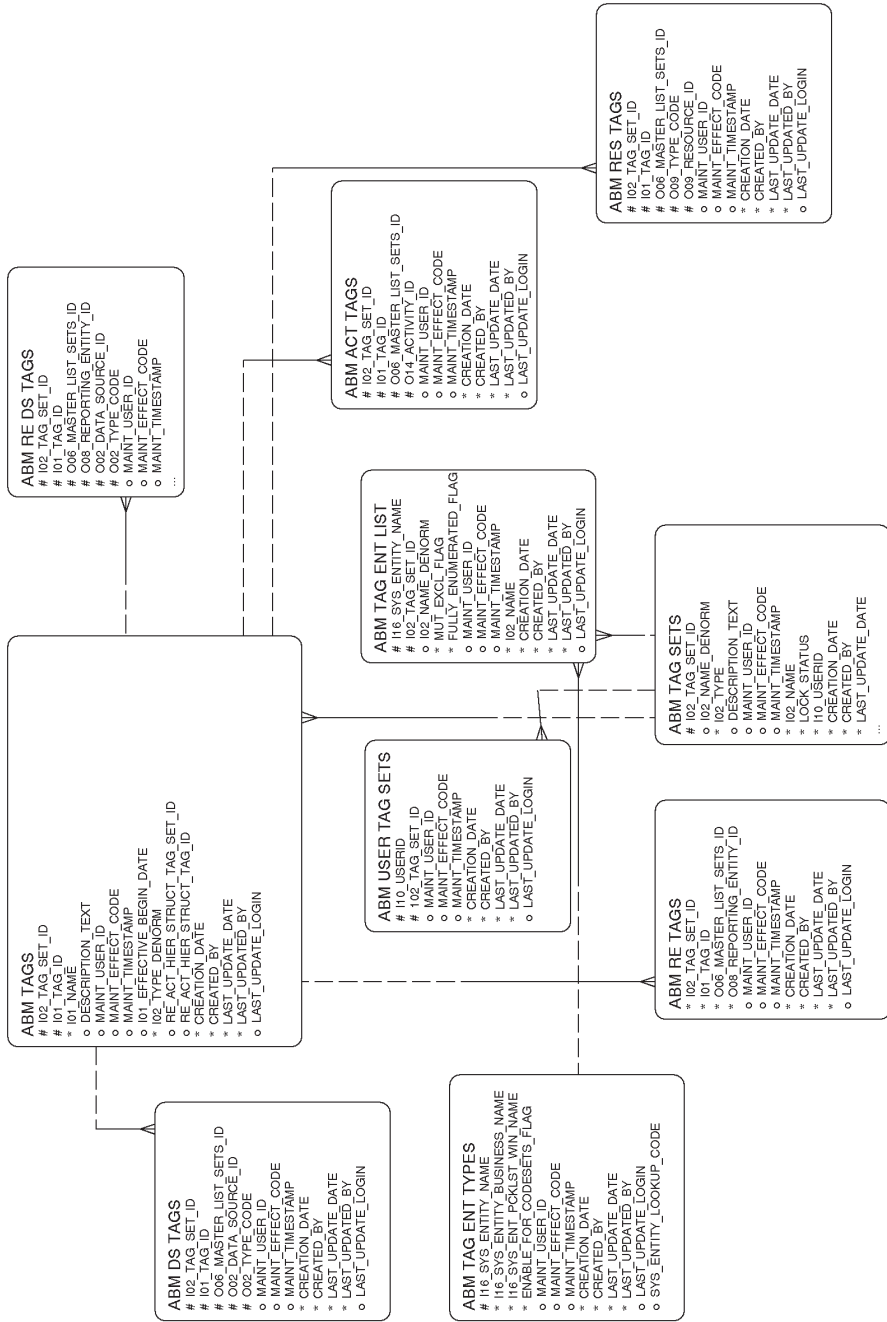


Diagram 3 – Bill Hierarchy and Cost Object Unit Costs

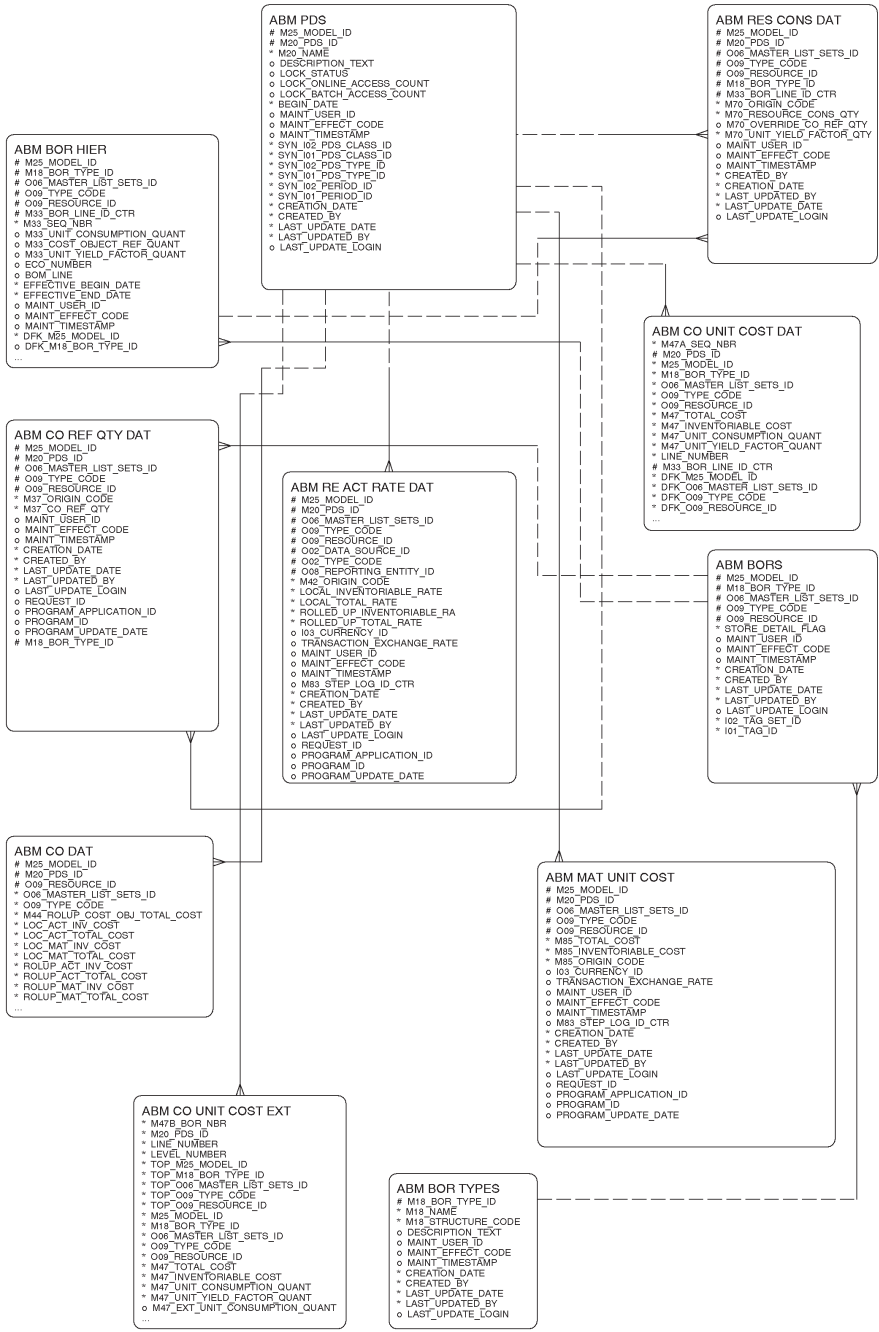


Diagram 4 – Budgeting

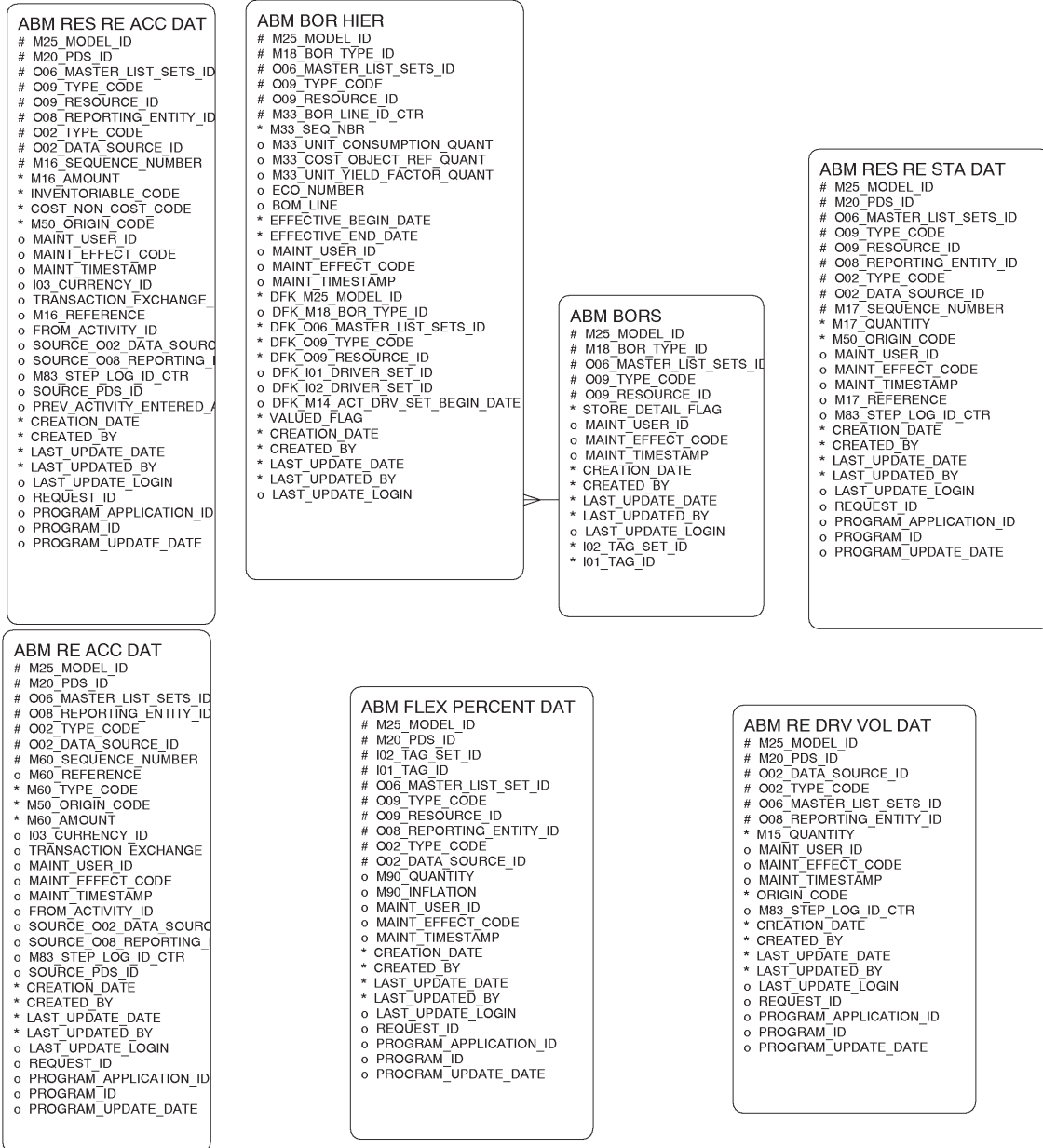
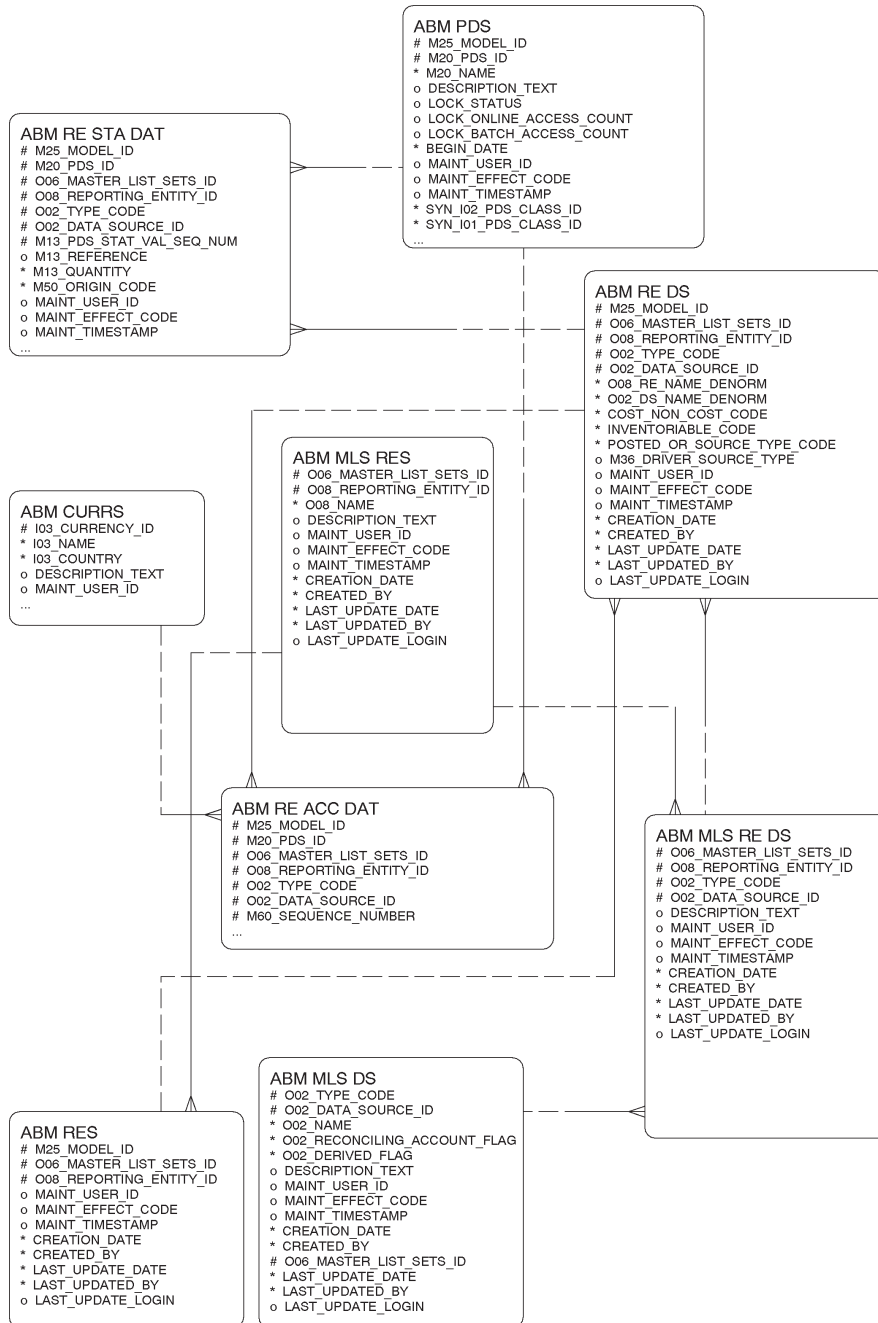


Diagram 6 – Dept Data / Stat + Account



Oracle Proprietary, Confidential Information—Use Restricted by Contract

Diagram 8 – Labels

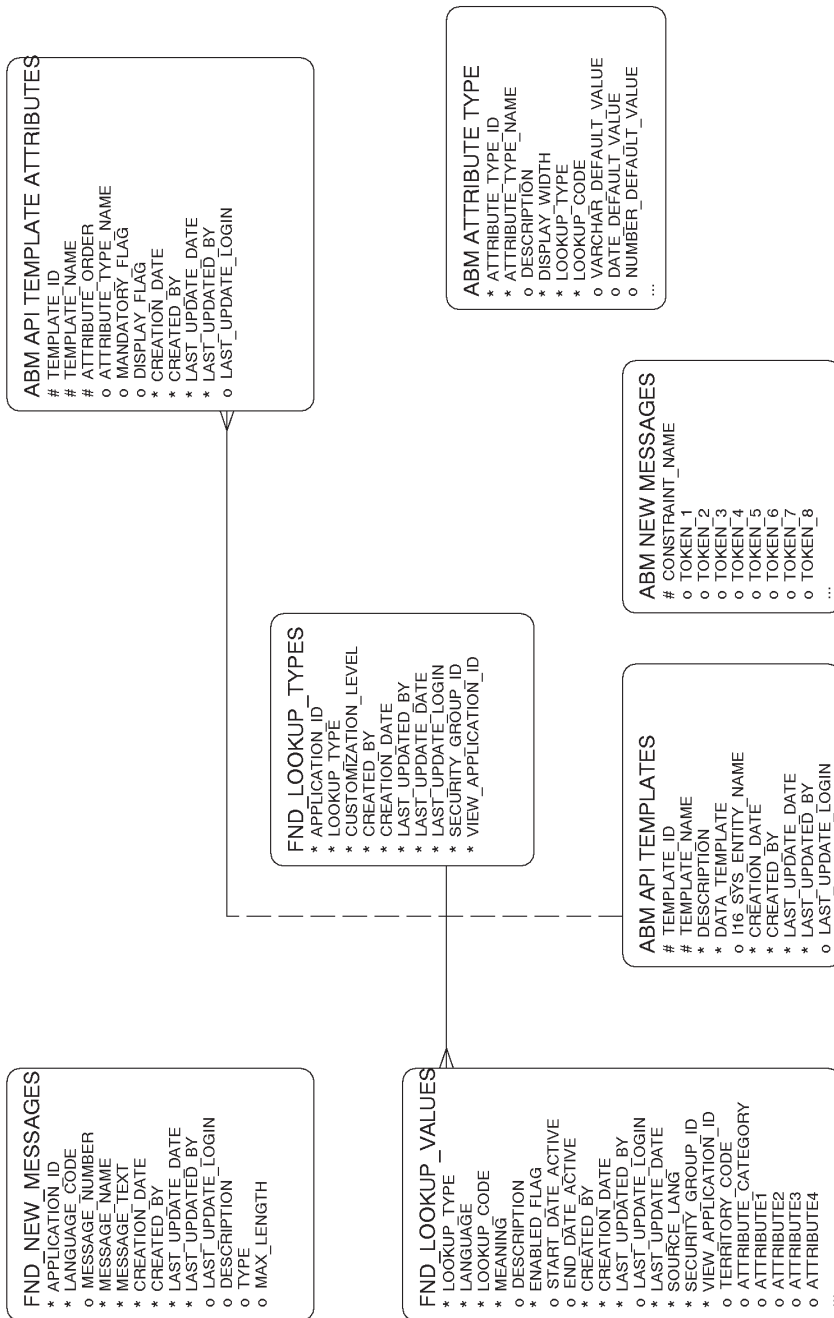
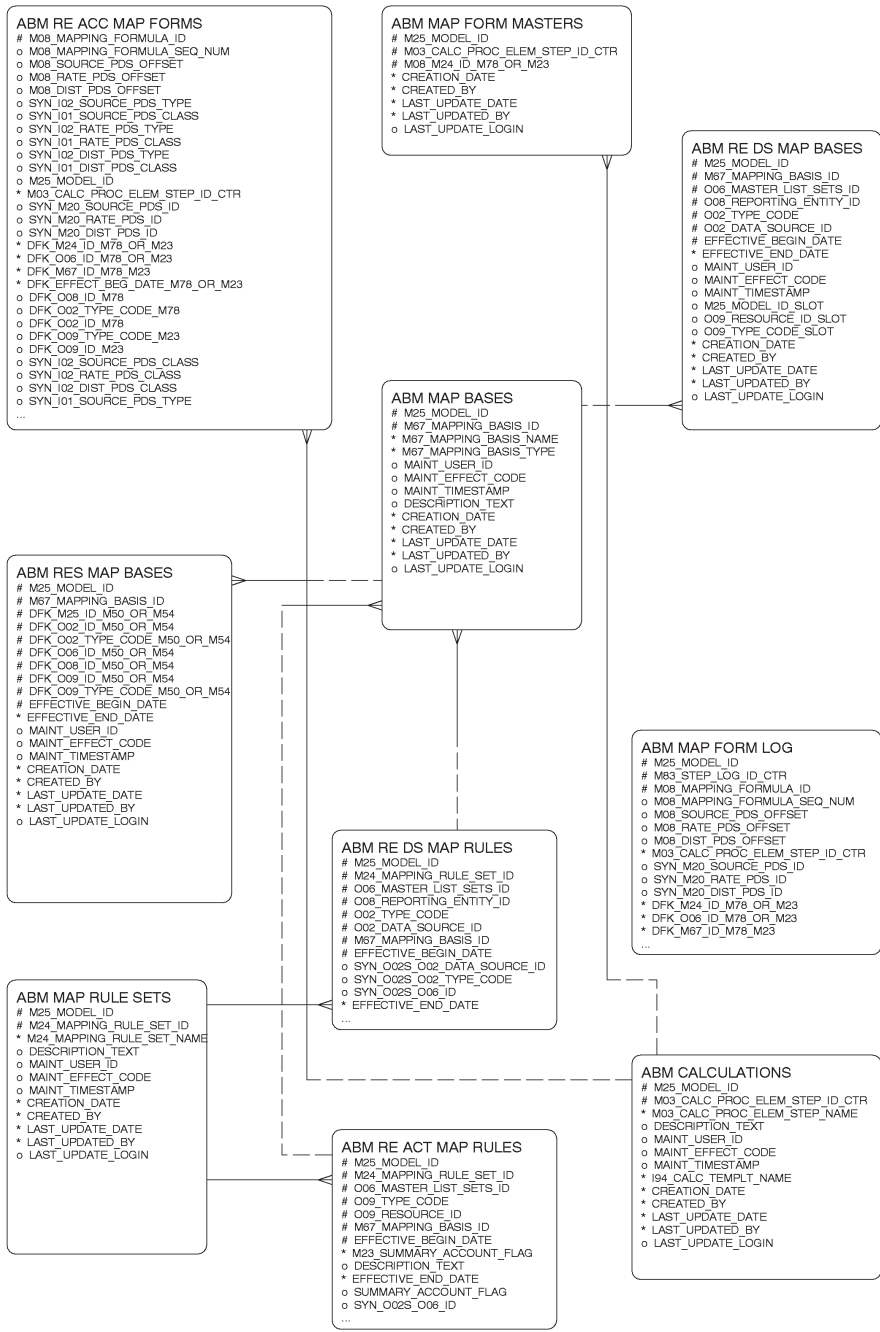


Diagram 10 – Mapping / Transactional Mapping



Oracle Proprietary, Confidential Information—Use Restricted by Contract

Diagram 11 – Materials

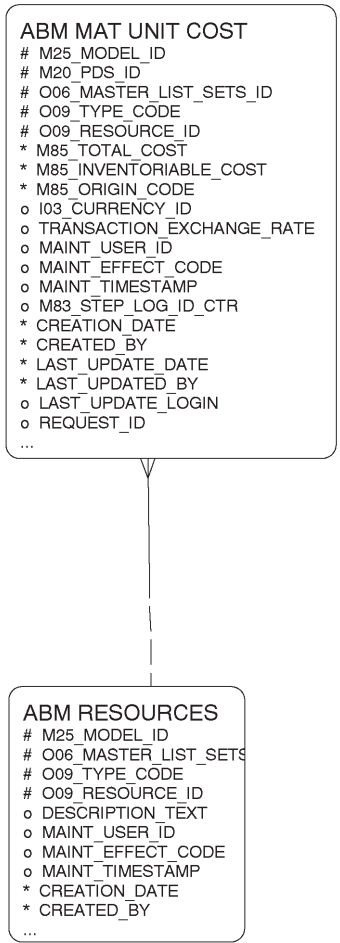


Diagram 13 – Reports

