
Database Diagrams

This section graphically represents most of the significant Oracle Treasury tables and the relationships between them, organized by building block. Use this section to quickly learn what tables each Oracle Treasury application building block uses, and how these tables interrelate. Then, you can refer to the Table and View Definitions sections of for more detailed information about each of those tables.

This section contains a database diagram for each of the following Oracle Treasury application building blocks:

- Diagram 1: Account Maintenance
- Diagram 2: Accruals and Revaluations
- Diagram 3: Central Repository
- Diagram 4: Confirmation
- Diagram 5: Currency Relationships
- Diagram 6: Deal Capture
- Diagram 7: Journals
- Diagram 8: Limits
- Diagram 9: Party Relationships
- Diagram 10: Reconciliation
- Diagram 11: Tax Brokerage
- Diagram 12: Transaction Validation

Some tables, especially important reference tables, appear in more than one database diagram. When several building blocks use a table, we show that table in each appropriate database diagram.

Account Maintenance

Diagram 1 shows the tables and relationships associated with entering and maintaining bank accounts in Oracle Treasury. The tables store information such as the bank account interest rates, and current and historic bank balances.

Accruals and Revaluations

Diagram 2 shows the tables and relationships associated with accruals and revaluations of your deals in Oracle Treasury. The tables store

reevaluation rates, current market rates, reevaluation details, and associated deal details.

Central Repository

Diagram 3 shows the XTR_DEAL_DATE_AMOUNTS table where deals are grouped by different date types, amount types, and amount actions for journal purposes. The denormalized XTR_DEAL_DATE_AMOUNTS table also contains information on treasury positions.

Confirmations

Diagram 4 shows the tables and relationships related to confirming deal actions in Oracle Treasury. The tables store information on confirmation letter templates and confirmation types.

Currency Relations

Diagram 5 shows the tables and relationships that describe the currency relationships you have defined in Oracle Treasury. The tables store information on currency holiday rules, spot rates, authorized currencies and currency combinations, and interest rate policies.

Deal Capture

Diagram 6 shows the tables associated with capturing deal information. The tables store information such as deal types, subtypes, product types, payment schedules, bond issues, limits, exposures, and authorized users.

Journals

Diagram 7 shows the tables and relationships that Oracle Treasury uses to transfer deal information to your general ledger for creating journal entries. You create journal entries from the data in these tables and

post the journal entries in your general ledger to update your account balances

Limits

Diagram 8 shows the tables and relationships associated with limits policies. The tables store information on each limit type and the parties and deals to which those limits are applied.

Party Relations

Diagram 9 shows the tables and relationships between the different parties in Oracle Treasury. The tables contain information on each party, their party groups, settlement categories, and associated limits.

Reconciliation

Diagram 10 shows the tables and relationships that define how you reconcile your bank statements against your treasury deal information. The tables contain information on bank statement import sources, reconciliation processes and passes, and interface statuses.

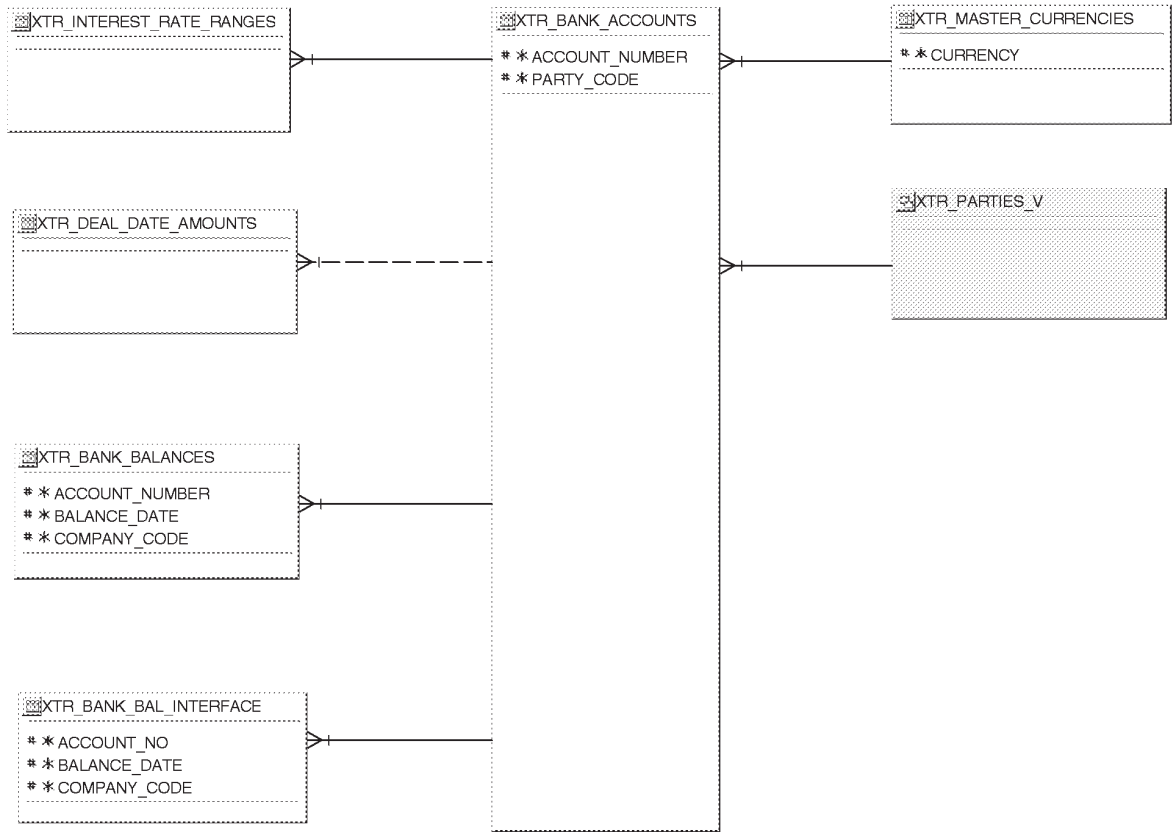
Tax and Brokerage

Diagram 11 shows the tables and relationships that define your tax and brokerage structure. The tables contain information on brokerage and tax categories, settlements, and deductions.

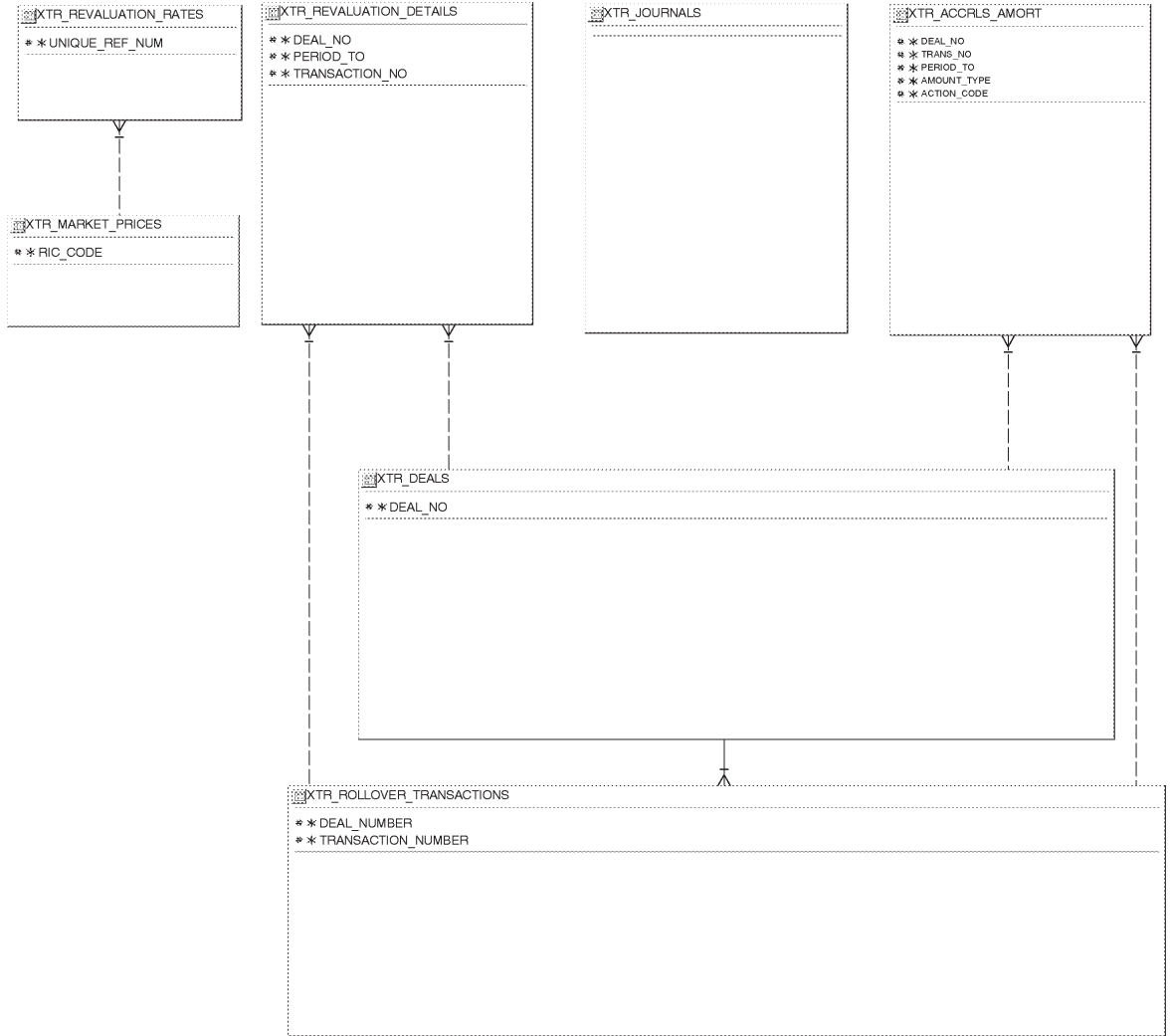
Transaction Validation

Diagram 12 shows the tables and relationships that define the process for validating a transaction in Oracle Treasury. The tables contain information on deals, confirmation details, and rolled over transactions.

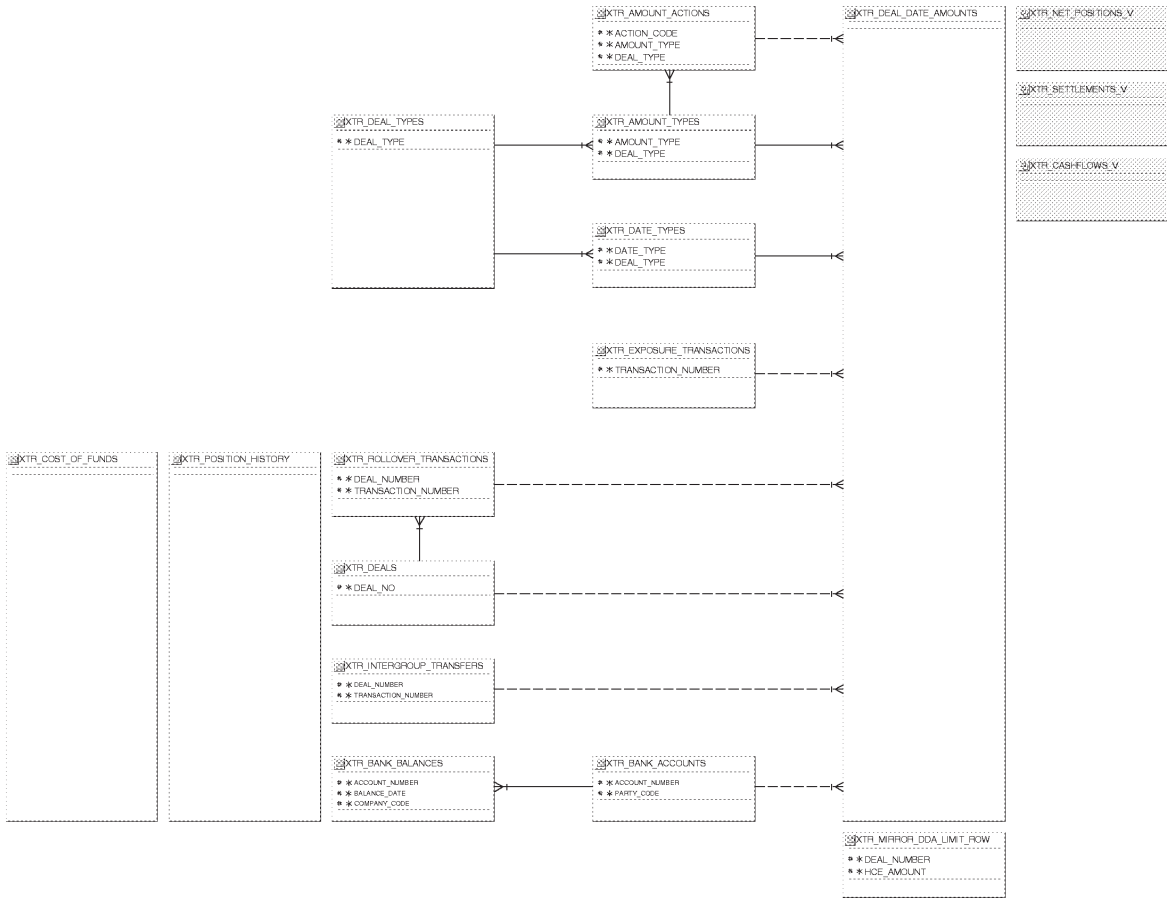
Account Maintenance



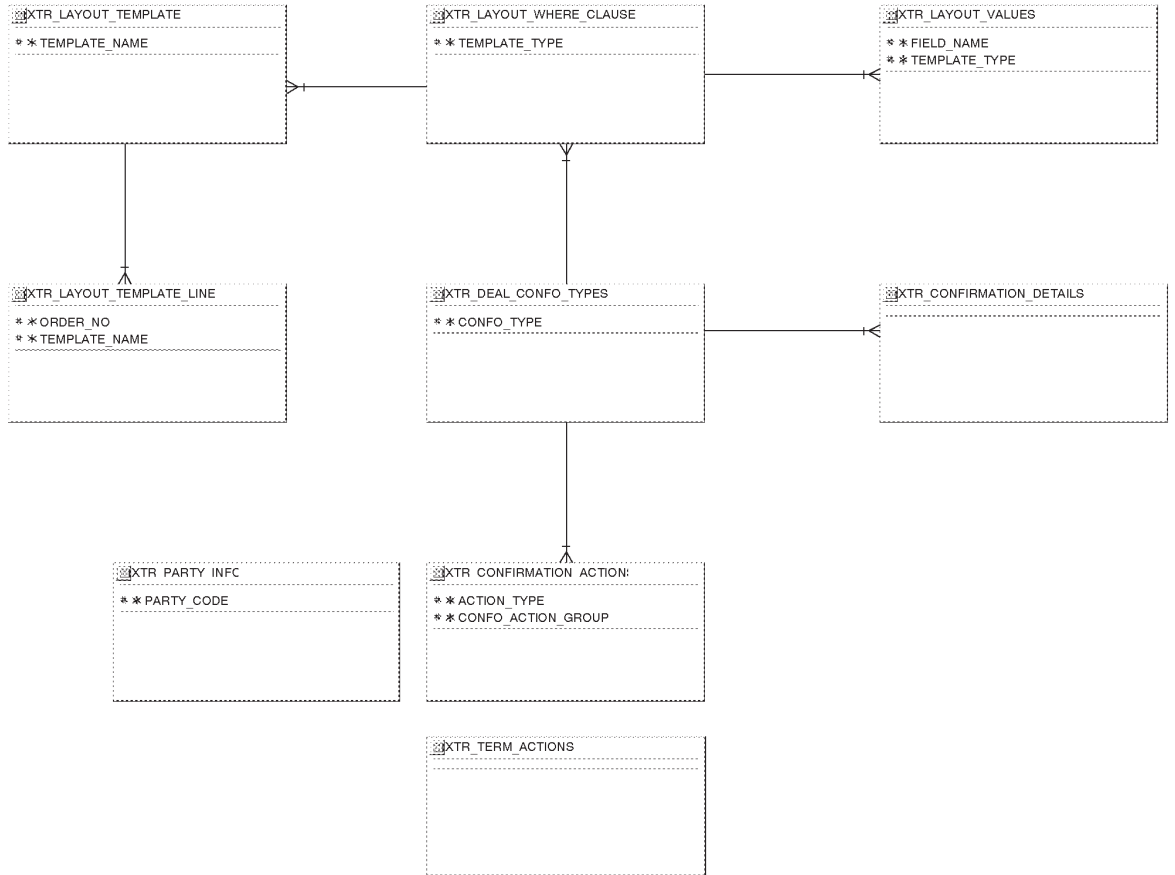
Accruals and Revaluations



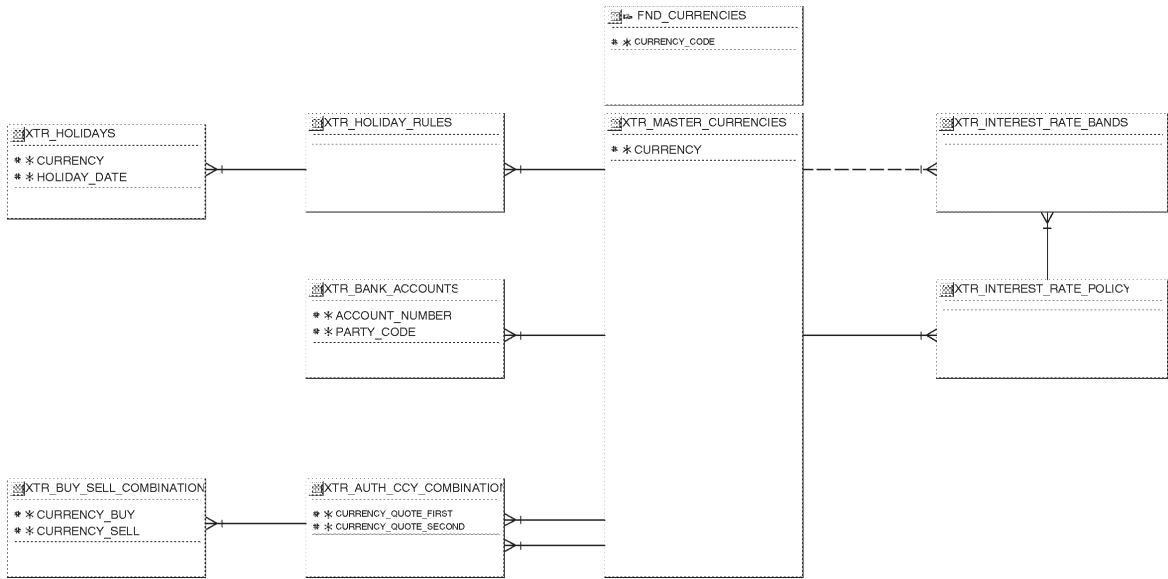
Central Repository



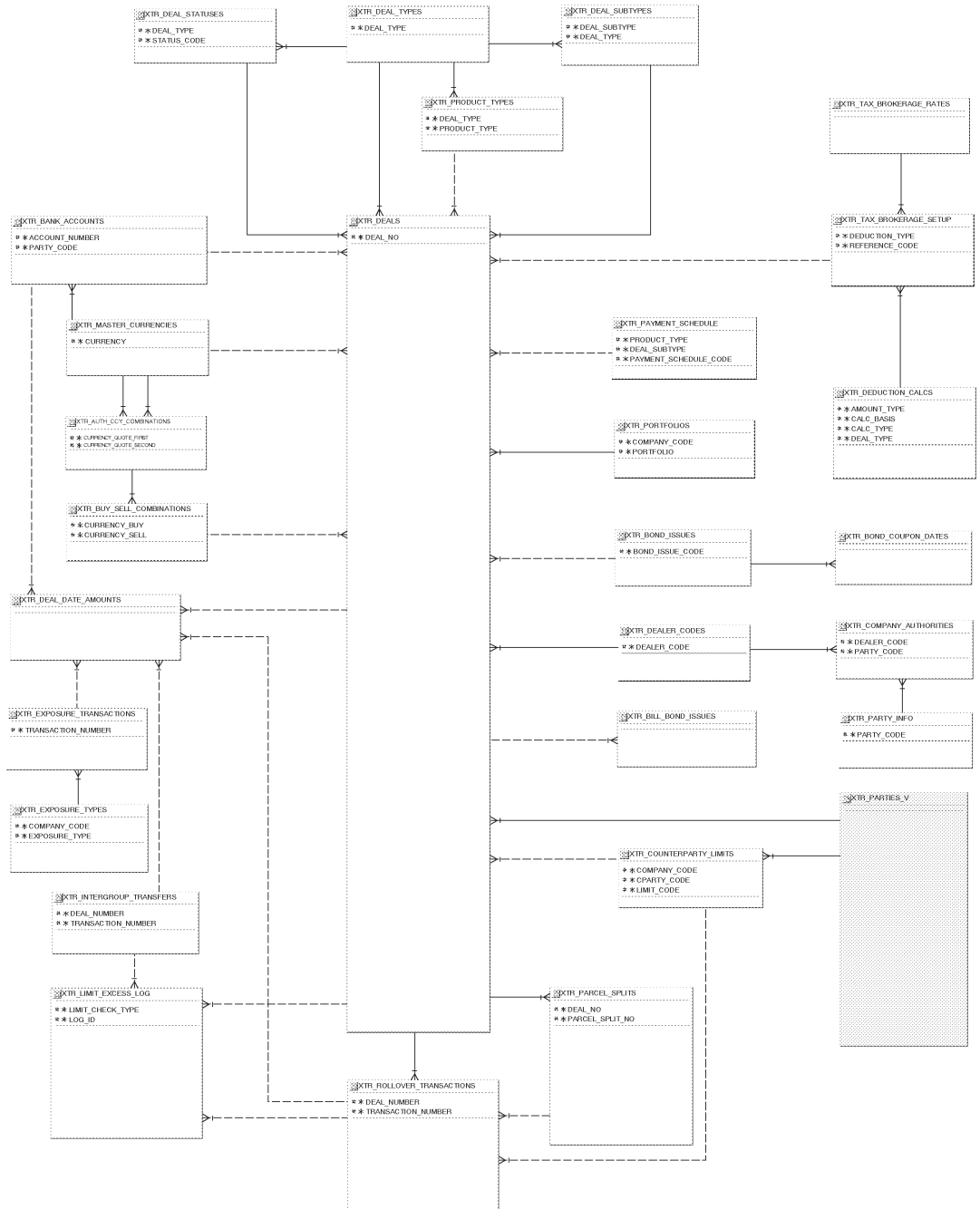
Confirmations



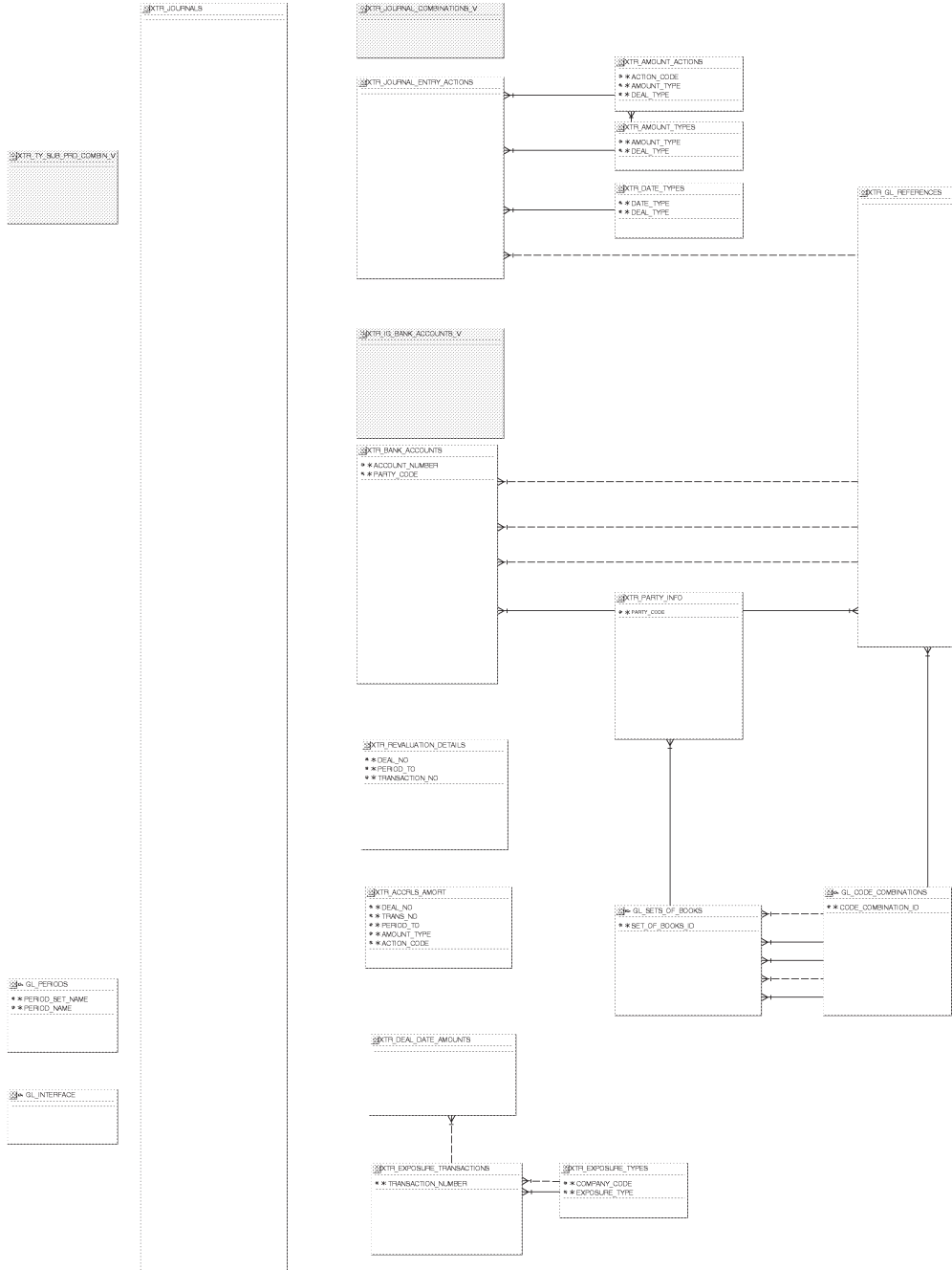
Currency Relations



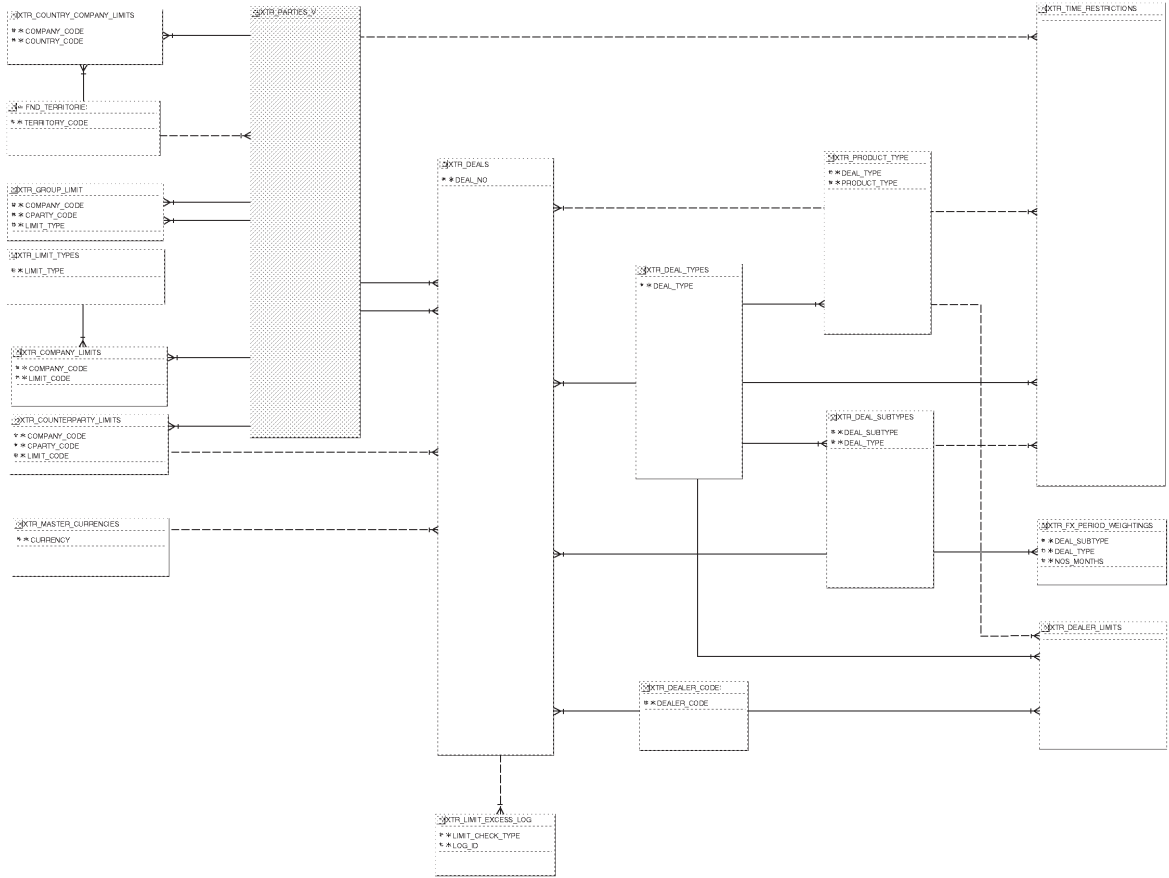
Deal Capture



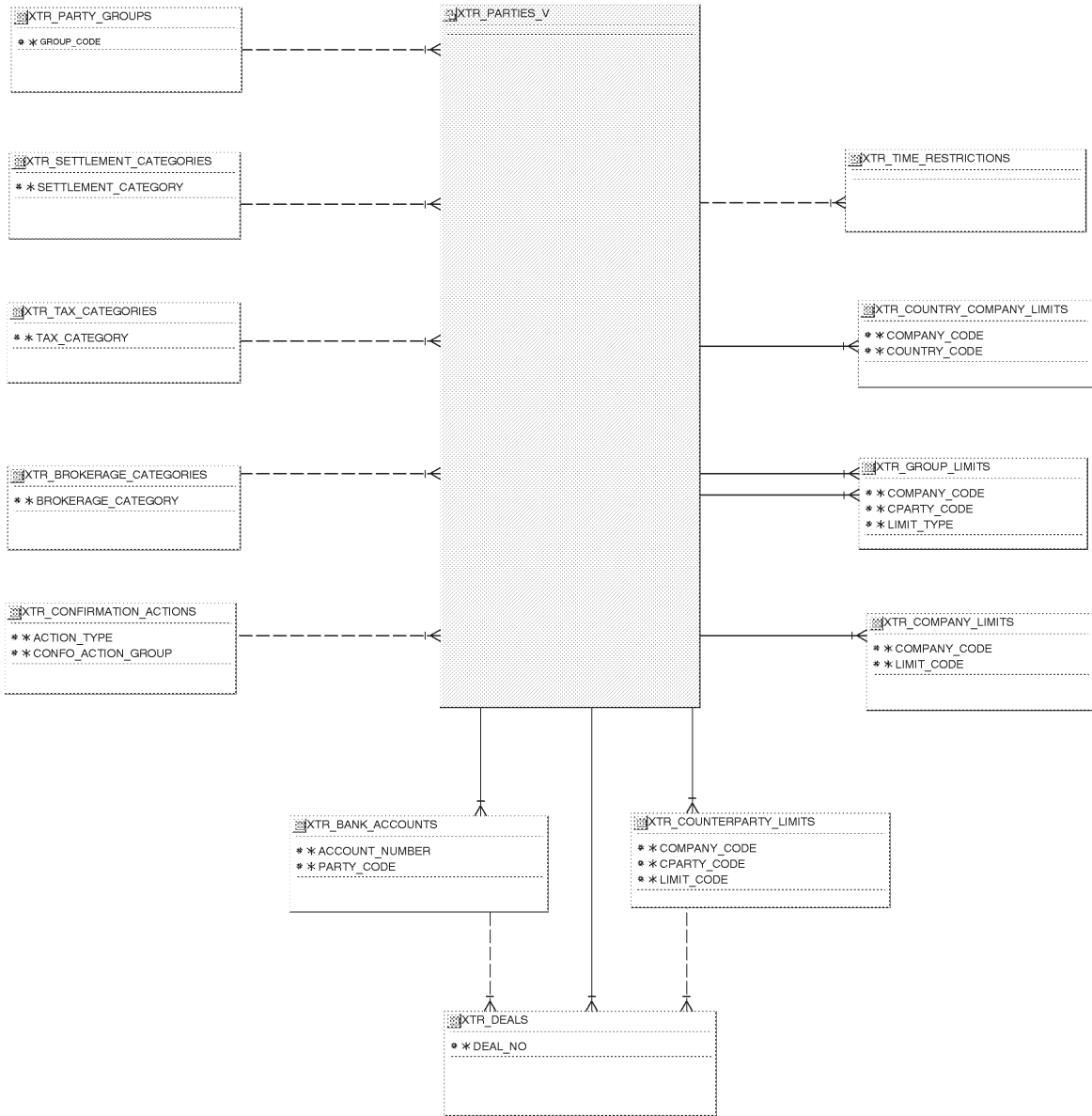
Journals



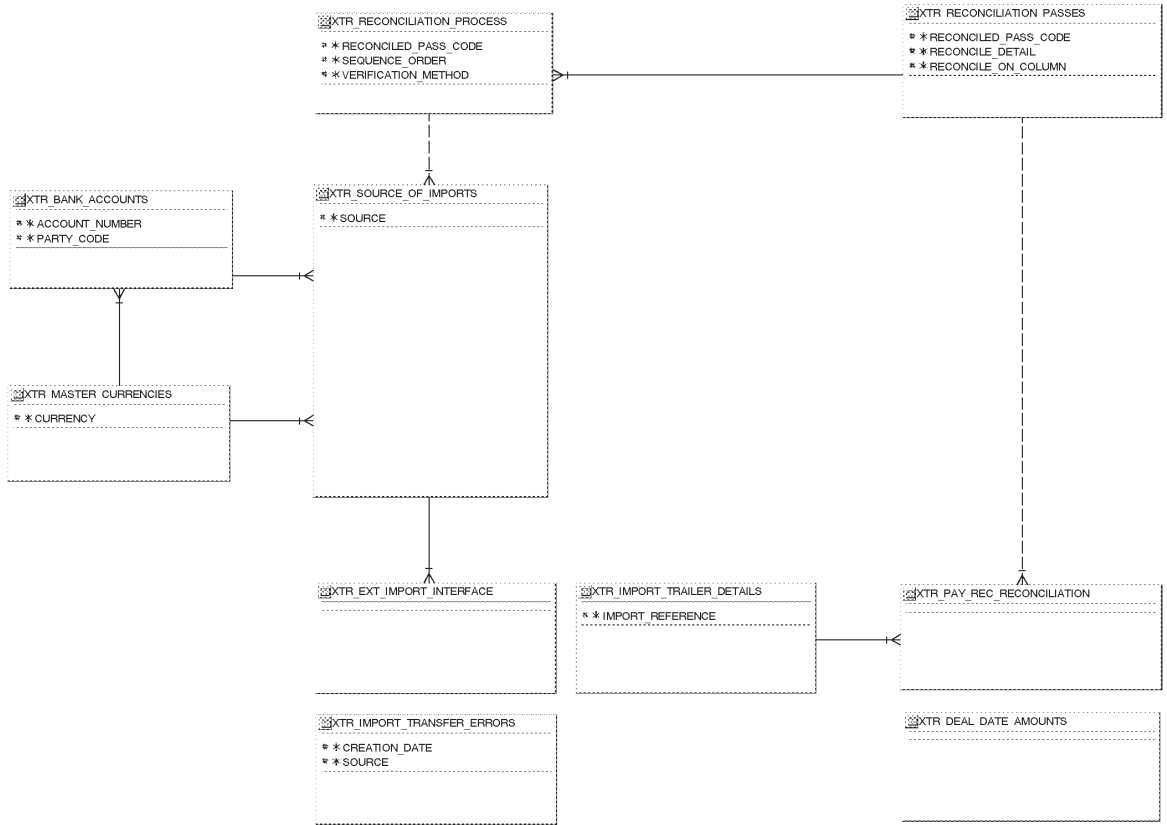
Limits



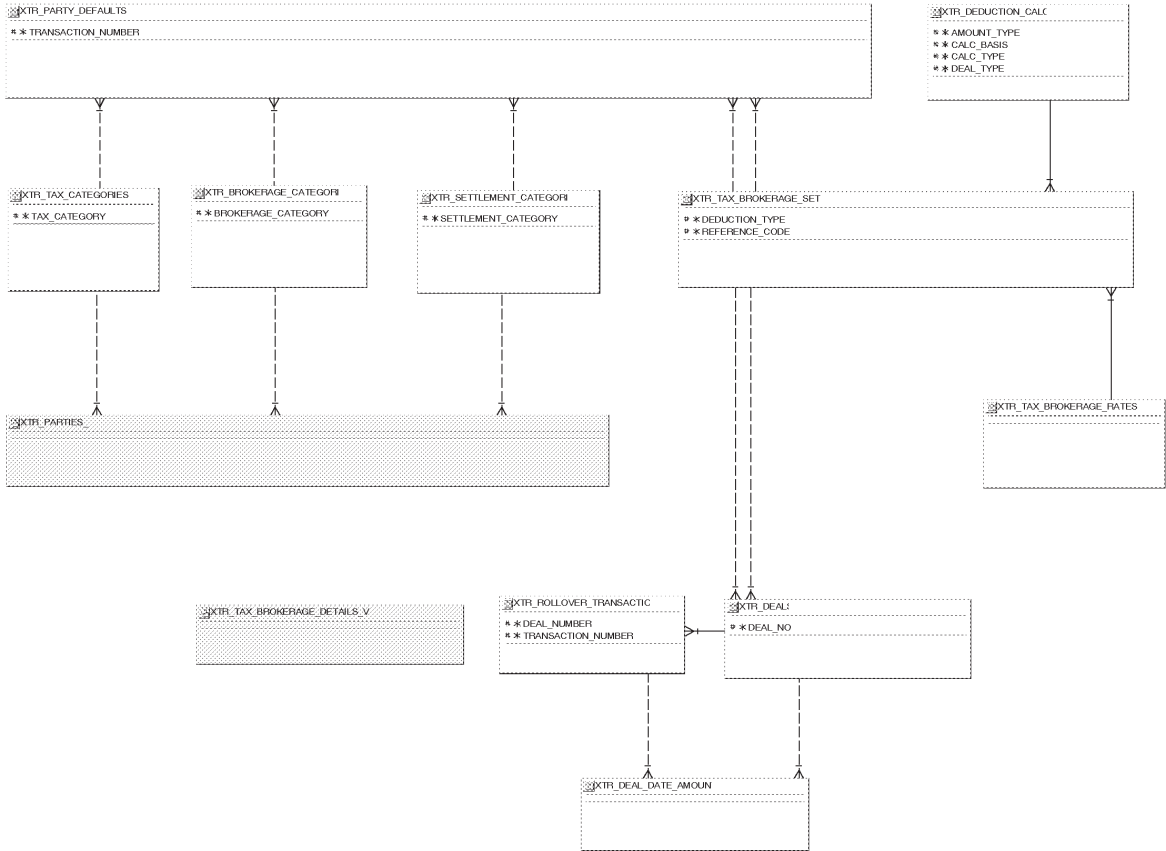
Party Relations



Reconciliation



Tax and Brokerage



Transaction Validation

